

Solenoid valve 4V series Air valve 4A series

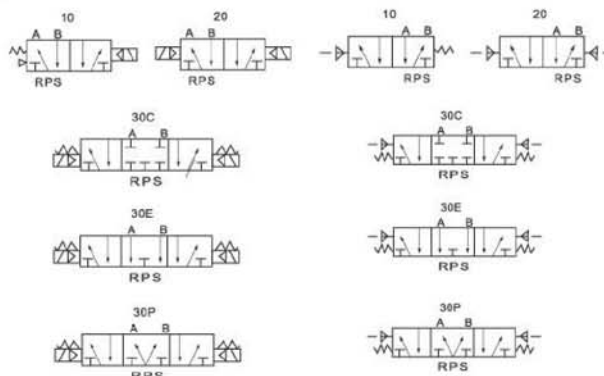


4A320-15



4V410-15

Symbol:



How to order

4V/4A	4	10	-	15	AC110V
Series code V: solenoid valve A: air valve	Series 4: 400 series	Position & coil 10: 2/5 way single electrical control 20: 2/5 way double electrical control 30C: 3/5 way (midst closed type) double electrical control 30E: 3/5 way (midst exhaust type) double electrical control 30P: 3/5 way (midst pressure type) double electrical control		Port size 10: 3/8" 15: 1/2"	Voltage DC12V DC24V AC24V 50/60Hz AC110V 50/60Hz AC220V 50/60Hz AC380V 50/60Hz

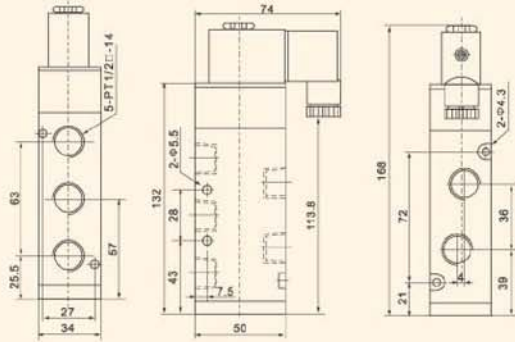
Specification

Model	4V410-15 4A410-15	4V420-15 4A420-15	4V430C-15 4A430C-15	4V430E-15 4A430E-15	4V430P-15 4A430P-15
Fluid	Air (filtered through 40µ filter element)				
Action	Internally piloted acting type				
Valve type	2/5 way		3/5 way		
Effective area (mm ²)	50mm ² (CV=2.79)		30mm ² (CV=1.68)		
Port size	In=out=exhaust=1/2"				
Lubrication	Not required				
Operating pressure	1.5~8.0kgf/cm ²				
Proof pressure	10.5kg/cm ²				
Ambient & fluid temperature	5~60°C				
Voltage range	± 10%				
Power consumption	AC:4.5W DC:3.0W				
Insulation grade	F grade				
Protection	IP65 (DIN 40050)				
Connection	Lead wire type or terminal type				
Max. frequency	5 cycle/sec.				
Min. response time	0.05 sec.				
Weight (kg)	590g	770g	770g	770g	770g
Main parts material	Body	Aluminum alloy			
	Seal	NBR			

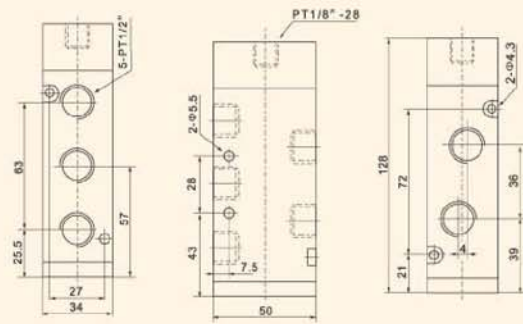
Dimension

2
Control
equipment

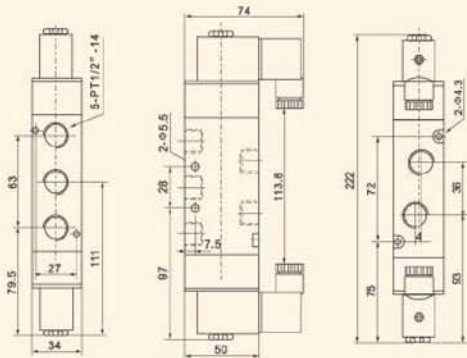
4V410-10(15)



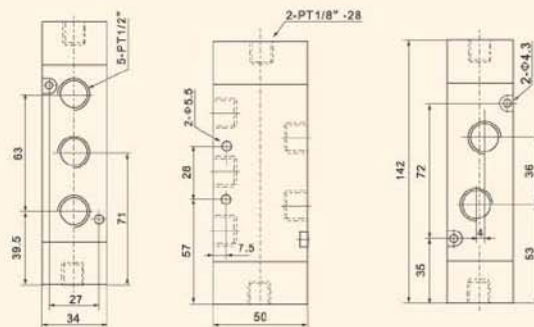
4A410-10(15)



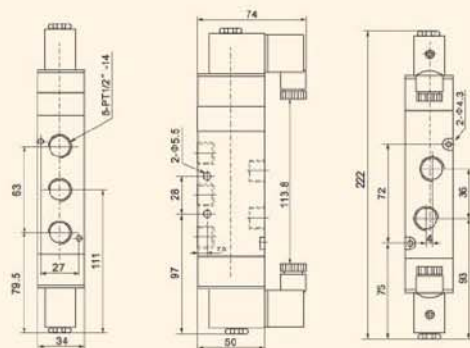
4V420-10(15)



4A420-10(15)



4V430-10(15)



4A430-10(15)

